



## EZ INLINE FILTER MANUAL

---

Fast, clean, easy to use.

Simply attach in place of your Z Filter cartridge to convert your filtering process to the EZ Filter System.

Specifically designed for the maximum purification of water and alcohol.



*Fast, clean, easy to use.*

*Simply attach in place of your Z Filter cartridge to convert your filtering process to the EZ Filter System.*

*Specifically designed for the maximum purification of water and alcohol.*

*Your EZ Inline Filter comes assembled ready to use. Each carbon cartridge is suitable for one batch of alcohol from a 25 Litre (6.6 US Gal.) Still, or for 300 Litres (79 US Gal.) of water. It is a simple matter to replace the used cartridge, see parts and assembly detail.*

### **CARBON CARTRIDGE TECHNOLOGY**

The unique EZ Filter Carbon Cartridge is constructed from a specially formulated blend of carbons designed to deliver maximum performance.

This blend of carbons has been selected with pore sizes ideal for removing impurities in distilled spirit or unwanted chemicals from water and is fast, clean and easy to use.

### **OPERATION**

1. Soak the EZ filter cartridge in a glass of clean water until the cartridge is fully submerged and air bubbles have stopped escaping from it. This is necessary to remove mineral salts from the carbon and flush out any carbon dust. You should do this for every new cartridge.
2. Connect the filter to the tap on the reservoir (not supplied) with a short length of clear PVC tube. The tube should not be more than 100mm long.
3. Close the tap and add your spirit to the reservoir.
4. Adjust the alcohol level to under 50% with clean water. Check this with a Spirit Hydrometer or Alcometer.
5. Open the tap and allow the spirit to pass through the filter into a collecting pail.

### **MINERAL SALTS**

Mineral salts are present in the ingredients used for manufacturing activated carbon. If these are not flushed out they can be absorbed into the spirit. Later these salts can become insoluble in the spirit, especially at lower temperatures, and can form a fine sediment or haze. These salts are not dangerous, but you do not want them in your spirit as they can form crystals or haze in the spirit. This is why we recommend flushing the filter with clean water before use. If a haze forms it will sediment out over a few days and you can decant your spirit off. If this occurs you should increase the cartridge soaking next time.

best if the alcohol concentration is 50% or less. This is why we recommend adjusting the alcohol level before purification.

## PURIFICATION

Activated carbon is prepared in a manner which causes the carbon crystals to become porous and develop a very large surface area. One gram of activated carbon may have 500 –1500 square metres of internal surface area. This large surface area and the many internal pores in the carbon are able to adsorb many different chemical compounds including those which cause unwanted flavours in your spirit. The absorption process is very complex and depends on concentrations, molecular weight etc. In the case of alcoholic spirit the process works

## ASSEMBLY

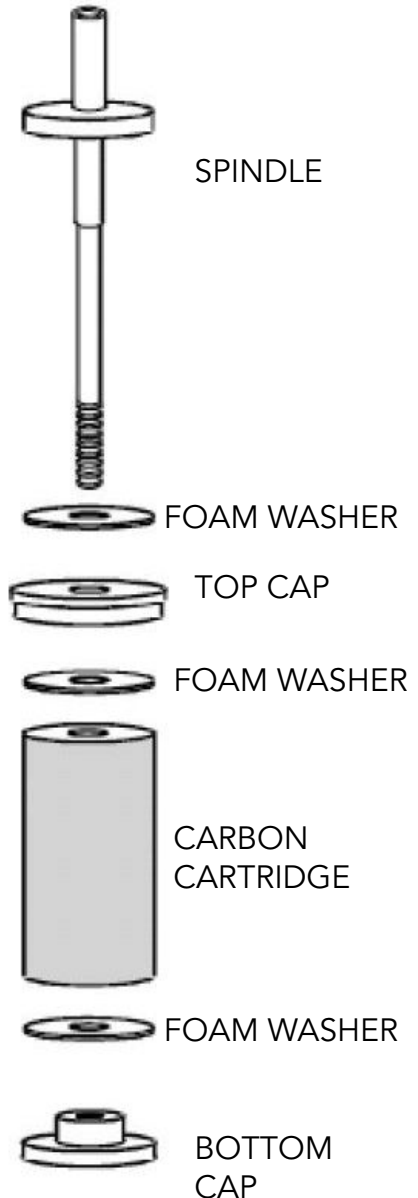
Your EZ Inline Filter comes assembled ready to use. Each carbon cartridge is suitable for one batch of alcohol from a 25 Litre (6.6 US Gal.) Still, or for 300 Litres (79 US Gal.) of water after which it should be replaced. Foam washers are reusable for up to 3 times but should be replaced if they flatten with use and no longer recover to normal thickness. It is a simple matter to replace the used cartridge.

Components are assembled in the following order on the spindle:

1. Foam Washer
2. Top cap
3. Foam Washer
4. Carbon Cartridge
5. Foam Washer
6. Bottom Cap

Screw up by hand, taking care not to over tighten.

Press the outer plastic housing onto the top cap.





[www.stillspirits.com](http://www.stillspirits.com)

Your local Still Spirits stockist

Reorder# 800017